

Battery Construction

Component	Positive Plate	Negative Plate	Container	Cover	Safety Valve	Terminal	Separator	Electrolyte
Raw material	Lead dioxide	Lead	ABS UL94HB/V0	ABS UL94HB/V0	Rubber	Copper	Fiberglass	Sulfuric acid

Constant Current Discharge Rating Amperes @25°C (77°F)

Time	10min	15min	30min	1hr	3hr	5hr	10hr	20hr
Final Discharge Voltage A/cell	15.14	12.34	7.18	4.20	1.82	1.19	0.65	0.35

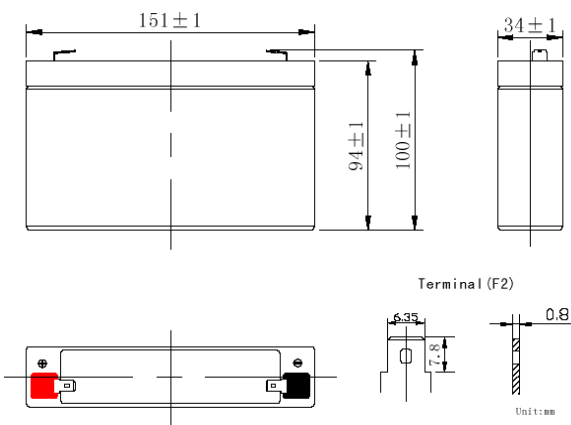
Characteristics

Rated Capacity 25°C (77°F)		C20 1.75V/C		7.00 AH
		C10 1.75V/C		6.51 AH
		C5 1.70V/C		5.95 AH
		C1 1.60V/C		4.20 AH
Internal Resistance		Full charged battery 25°C (77°F)		18.0 mΩ
Capacity affected by temperature (20 hour rate)		40°C (104°F)		107%
		25°C (77°F)		100%
		0°C (32°F)		76%
		-10°C (14°F)		66%
Self Discharge		Batteries can be stored for more than 6 months at 25°C. Self-discharge ratio less than 3% per month at 25°C. Please charge batteries before using.		
Standard Terminal				F2
Max. Discharge Current 25°C (77°F)				70 A(5s)
Final Discharge Voltage V/cell		1.75V	1.70V	1.60V
Discharge Current (A)		(A) ≤0.15C	0.15C< (A) < 0.5C	(A) ≥0.5C
Charging (Constant Voltage)	Cycle	Initial Charging Current 1.8 A Or Small		
		7.20V~7.35V/ 25°C (77°F)		
	Float	6.75V~6.90V/ 25°C (77°F)		

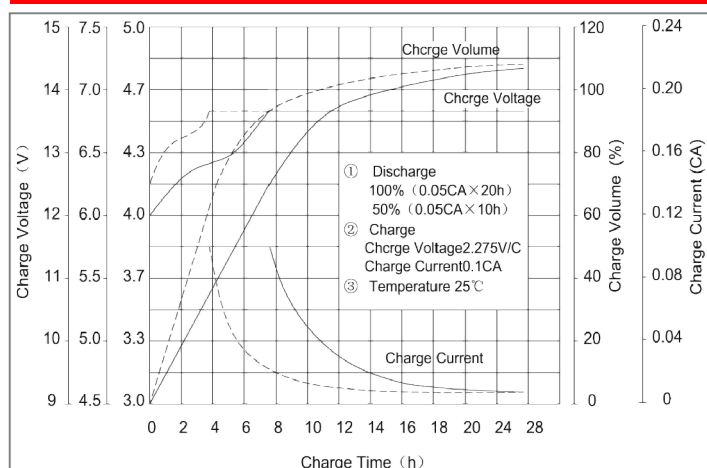
Specifications

Nominal Voltage		6 V	
Nominal Capacity (20hr)		7 AH	
Dimension	Length	151 mm	5.94 in
	Width	34 mm	1.34 in
	Height	94 mm	3.70 in
	Total Height (with terminals)	100 mm	3.94 in
Weight	Approx.	1.15 kg	2.53 lbs

Physical Dimensions: mm



Charge characteristic curve for standby use



Discharge characteristics 25°C (77°F)

